

# Asthma attack response

A suggestion for implementing the strategy  
'Recognise and respond to an asthma attack '  
from the Guide: [Asthma and learning](#)

---

## **Includes:**

- Asthma first aid
- Response to an asthma attack
- Asthma emergency treatment
- Response to difficulty breathing
- Emergency treatment
- Useful resources

Inclusive Education

From

Guide: [Asthma and learning](#)

Strategy: [Recognise and respond to an asthma attack](#)

Suggestion: [Asthma attack response](#)

Date

21 May 2024

Link

[inclusive.tki.org.nz/guides/asthma-and-learning/asthma-attack-response](https://inclusive.tki.org.nz/guides/asthma-and-learning/asthma-attack-response)

---

## Asthma first aid

The six steps for delivering first aid support to someone having an asthma attack are explained in this short video.



Video hosted on Vimeo <http://vimeo.com/219931468>

No captions or transcript

Source:

[Breathe Hawke's Bay Asthma First Aid \(NZ\)](https://breathehb.co.nz/resources/)  
<https://breathehb.co.nz/resources/>

Inclusive Education

From

Guide: [Asthma and learning](#)

Strategy: [Recognise and respond to an asthma attack](#)

Suggestion: [Asthma attack response](#)

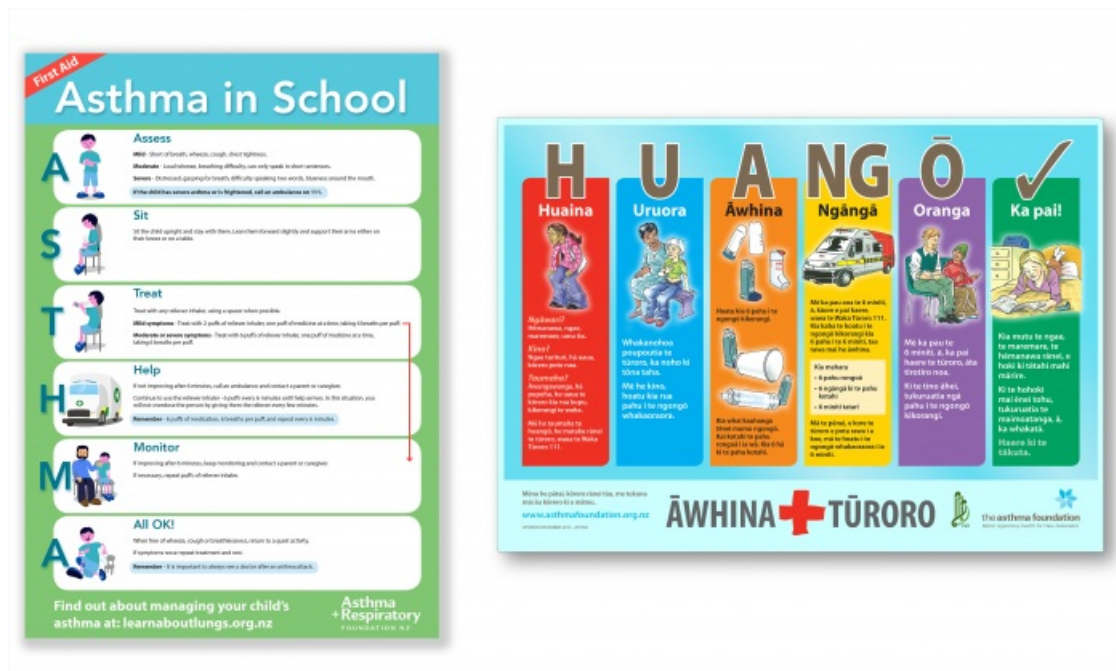
Date

21 May 2024

Link

[inclusive.tki.org.nz/guides/asthma-and-learning/asthma-attack-response](https://inclusive.tki.org.nz/guides/asthma-and-learning/asthma-attack-response)

## Response to an asthma attack



Source:

[Asthma + Respiratory Foundation NZ](#)

<https://www.asthmafoundation.org.nz/resources/topic/asthma>

[View full image \(3.5 MB\)](#)

Inclusive Education

From

Guide: [Asthma and learning](#)

Strategy: [Recognise and respond to an asthma attack](#)

Suggestion: [Asthma attack response](#)

Date

21 May 2024

Link

[inclusive.tki.org.nz/guides/asthma-and-learning/asthma-attack-response](https://inclusive.tki.org.nz/guides/asthma-and-learning/asthma-attack-response)

---

## Asthma emergency treatment

Respond quickly if a child collapses and appears to have difficulty breathing.

### With spacer

1. Shake inhaler and insert inhaler mouthpiece into spacer.
2. Place spacer mouthpiece in person's mouth and press the canister once.
3. Ask the person to breathe in and out normally for about 6 breaths.
4. Repeat in quick succession until 6 puffs have been given.

### Without spacer

1. Shake inhaler.
2. Place mouthpiece in the person's mouth.
3. Give 1 puff as the person inhales slowly and steadily.
4. Ask the person to hold that breath for 6 seconds, then take 6 normal breaths.
5. Repeat as required.

Inclusive Education

From

Guide: [Asthma and learning](#)

Strategy: [Recognise and respond to an asthma attack](#)

Suggestion: [Asthma attack response](#)

Date

21 May 2024

Link

[inclusive.tki.org.nz/guides/asthma-and-learning/asthma-attack-response](https://inclusive.tki.org.nz/guides/asthma-and-learning/asthma-attack-response)

---

## Response to difficulty breathing

If a child or young person collapses and appears to have difficulty breathing, call an ambulance immediately whether or not the person is known to have asthma.

Follow the Asthma + Respiratory Foundation's response procedure for someone's first asthma attack.

- Call an ambulance immediately (DIAL 111).
- Give six puffs of a reliever inhaler.
- Six breaths for each puff.
- Repeat every six minutes, if little or no improvement.

No harm is likely to result from giving a reliever to someone who does not have asthma.

Note: An asthma emergency kit can be purchased from Asthma + Respiratory Foundation NZ. This includes a letter of Authorisation for Reliever Inhaler. This can be used only by schools and colleges in accordance with [Ministry of Health Guidelines](#).

Inclusive Education

From

Guide: [Asthma and learning](#)

Strategy: [Recognise and respond to an asthma attack](#)

Suggestion: [Asthma attack response](#)

Date

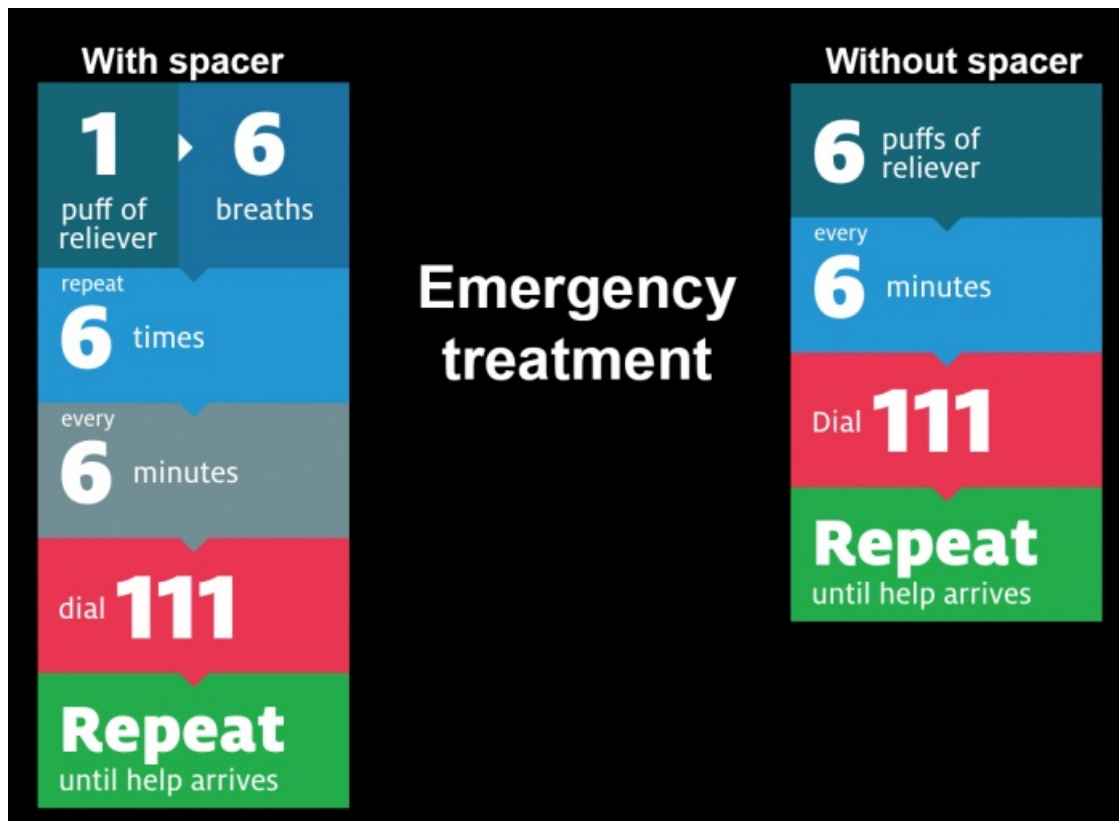
21 May 2024

Link

[inclusive.tki.org.nz/guides/asthma-and-learning/asthma-attack-response](https://inclusive.tki.org.nz/guides/asthma-and-learning/asthma-attack-response)

---

## Emergency treatment



Source:

Asthma + Respiratory Foundation NZ

<https://learnaboutlungs.asthmaandrespiratory.org.nz/mystudent/#/id/5aa6fb38d4ede20e7f9033e3>

[View full image \(293 KB\)](#)

Inclusive Education

From

Guide: [Asthma and learning](#)

Strategy: [Recognise and respond to an asthma attack](#)

Suggestion: [Asthma attack response](#)

Date

21 May 2024

Link

[inclusive.tki.org.nz/guides/asthma-and-learning/asthma-attack-response](https://inclusive.tki.org.nz/guides/asthma-and-learning/asthma-attack-response)

---

## Useful resources

First aid information.



### What to do in an emergency

Signs of an acute asthma attack requiring immediate action and an emergency plan are described in this information page.

Publisher: Asthma NZ

[Visit website](#)



### Asthma

First aid information outlining what to do during an asthma attack.

Publisher: St John NZ

[Visit website](#)

This information was downloaded/printed from the Ministry of Education's website "Inclusive Education". Except where otherwise noted it is Crown Copyright 2018.

Information on the Inclusive Education website is regularly updated so we recommend you check the website version of this information to ensure it remains current.