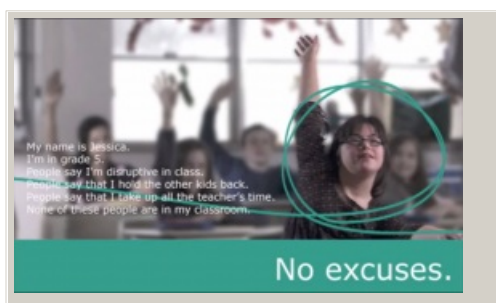


Consider social attitudes towards students

Use these videos to reflect on attitudes and beliefs towards inclusive practices.



Video hosted on Youtube http://youtu.be/G68R_nCuJTs

No captions or transcript

Source:

[Canadian Association of Community Living \(Canada\)](https://youtu.be/G68R_nCuJTs)
https://youtu.be/G68R_nCuJTs

This information was downloaded/printed from the Ministry of Education's website "Inclusive Education". Except where otherwise noted it is Crown Copyright 2018.

Information on the Inclusive Education website is regularly updated so we recommend you check the website version of this information to ensure it remains current.

