

# Ask the student what will help

A suggestion for implementing the strategy

'Identify student needs and how to provide support' from the Guide: [Dyslexia and learning](#)

---

## **Includes:**

Ask what helps

Support self-advocacy with learner profiles

Personalise learner profiles

Take a strengths-based approach

Create a safe environment

Useful resources

Inclusive Education

From

Guide: [Dyslexia and learning](#)

Strategy: [Identify student needs and how to provide support](#)

Suggestion: [Ask the student what will help](#)

Date

17 May 2024

Link

[inclusive.tki.org.nz/guides/dyslexia-and-learning/ask-the-student-what-will-help](https://inclusive.tki.org.nz/guides/dyslexia-and-learning/ask-the-student-what-will-help)

---

## Ask what helps

**Ask students, “What do I do that makes learning easy? What do I do that makes learning hard?”**

Discuss possible supports and make these available to all students.

Tate from Onslow College explains what works for him in the classroom.



Video hosted on Vimeo <http://vimeo.com/100662200>

Closed Captions

Source:

[Ministry of Education, inclusive education videos \(NZ\)](#)

<https://vimeo.com/showcase/2950799>

Inclusive Education

From

Guide: [Dyslexia and learning](#)

Strategy: [Identify student needs and how to provide support](#)

Suggestion: [Ask the student what will help](#)

Date

17 May 2024

Link

[inclusive.tki.org.nz/guides/dyslexia-and-learning/ask-the-student-what-will-help](https://inclusive.tki.org.nz/guides/dyslexia-and-learning/ask-the-student-what-will-help)

---

## Support self-advocacy with learner profiles

Having students create a learner profile for themselves is a great way to have them develop a better and fuller understanding of who they are as learners ...

This develops their independence and places them in a better position to self-advocate for the tools, learning materials, and presentation options that can optimise their learning experiences.

**Naryn Searcy**

**Source:**

UDL Resource

Inclusive Education

From

Guide: [Dyslexia and learning](#)

Strategy: [Identify student needs and how to provide support](#)

Suggestion: [Ask the student what will help](#)

Date

17 May 2024

Link

[inclusive.tki.org.nz/guides/dyslexia-and-learning/ask-the-student-what-will-help](https://www.inclusive.tki.org.nz/guides/dyslexia-and-learning/ask-the-student-what-will-help)

---

## Personalise learner profiles



Source:

Ministry of Education | Te Tāhuhu o te Mātauranga

<https://www.inclusive.tki.org.nz/assets/inclusive-education/resources/files/Developing+Learner+Profiles+infosheet.pdf>

[View full image \(1.2 MB\)](#)

Inclusive Education

From

Guide: [Dyslexia and learning](#)

Strategy: [Identify student needs and how to provide support](#)

Suggestion: [Ask the student what will help](#)

Date

17 May 2024

Link

[inclusive.tki.org.nz/guides/dyslexia-and-learning/ask-the-student-what-will-help](https://inclusive.tki.org.nz/guides/dyslexia-and-learning/ask-the-student-what-will-help)

---

## Take a strengths-based approach

Know your learners – understand what they can do, what their strengths are, and what their specific needs are.

Find out about:

- ✓ what motivates them
- ✓ what they are good at and enjoy doing
- ✓ what rewards them and reinforces their behaviours
- ✓ important people in their lives
- ✓ cultural connections and experiences and languages spoken
- ✓ how they like to unwind and relax
- ✓ dislikes and things they avoid
- ✓ how they like to learn and what helps them learn
- ✓ things that make it hard for them to learn
- ✓ what they do when they need help.

Inclusive Education

From

Guide: [Dyslexia and learning](#)

Strategy: [Identify student needs and how to provide support](#)

Suggestion: [Ask the student what will help](#)

Date

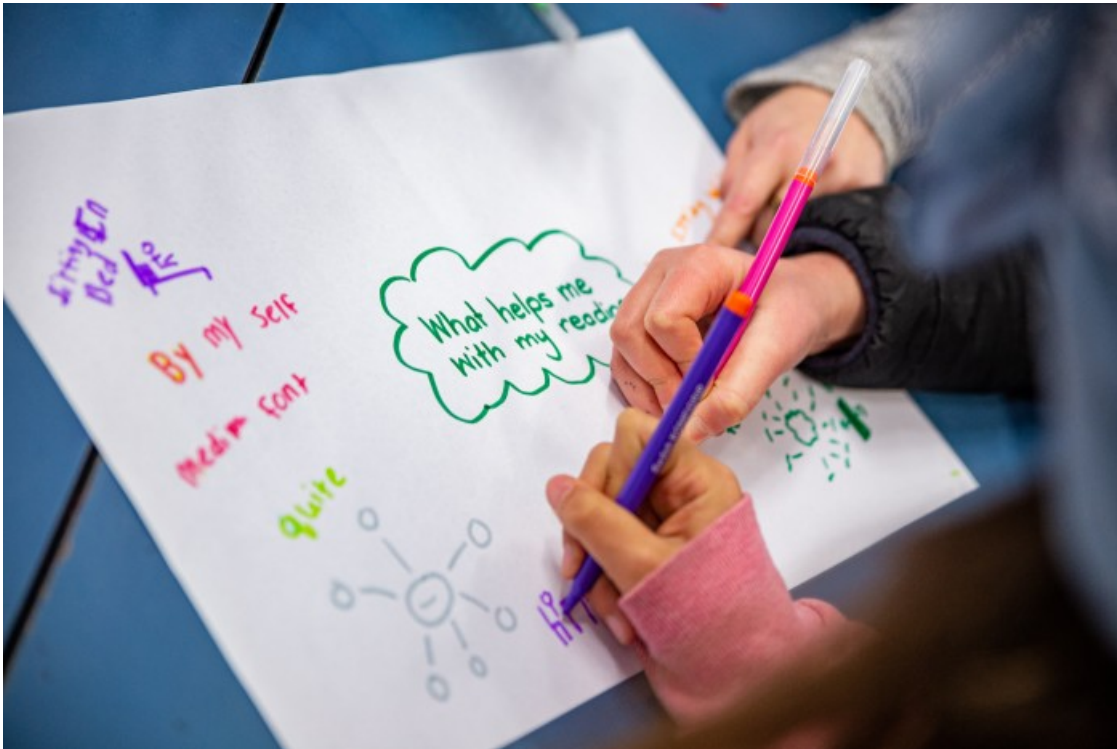
17 May 2024

Link

[inclusive.tki.org.nz/guides/dyslexia-and-learning/ask-the-student-what-will-help](https://inclusive.tki.org.nz/guides/dyslexia-and-learning/ask-the-student-what-will-help)

---

## Create a safe environment



Source:

Ministry of Education | Te Tāhuhu o te Mātauranga

[View full image \(517 KB\)](#)

[Inclusive Education](#)

From

Guide: [Dyslexia and learning](#)

Strategy: [Identify student needs and how to provide support](#)

Suggestion: [Ask the student what will help](#)

Date

17 May 2024

Link

[inclusive.tki.org.nz/guides/dyslexia-and-learning/ask-the-student-what-will-help](https://inclusive.tki.org.nz/guides/dyslexia-and-learning/ask-the-student-what-will-help)

---

## Useful resources



### Developing learner profiles

Read time: 3 min

This document provides general support and guidance when developing a learner profile. It includes prompts and questions, alongside purpose and benefits for students.

Publisher:

[Download](#) PDF (211 KB)



### About me

This learner profile template is a companion to "Developing learner profiles". It is an interactive PDF with questions for students to answer.

[Download](#) PDF (596 KB)

This information was downloaded/printed from the Ministry of Education's website "Inclusive Education". Except where otherwise noted it is Crown Copyright 2018.

Information on the Inclusive Education website is regularly updated so we recommend you check the website version of this information to ensure it remains current.