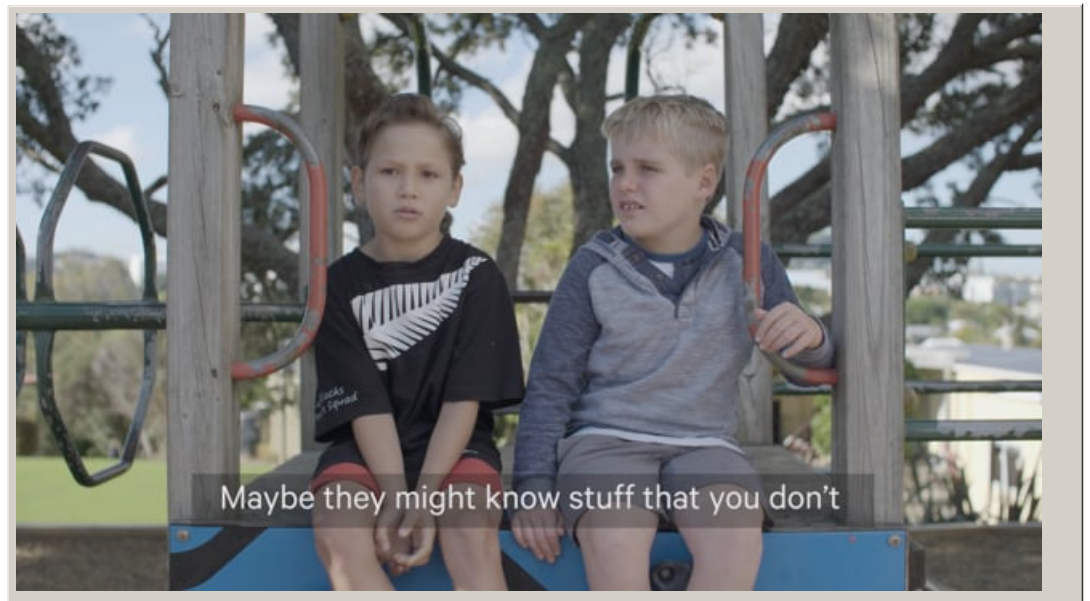


Take students' perspectives

Build relationships and talk to your students about disability and inclusion to understand their perspectives and wellbeing needs.



Video hosted on Vimeo <http://vimeo.com/169769705>

Closed Captions

Source:

[Ministry of Education](#)

<https://vimeo.com/showcase/2950799/video/169769705>

This information was downloaded/printed from the Ministry of Education's website "Inclusive Education". Except where otherwise noted it is Crown Copyright 2018.

Information on the Inclusive Education website is regularly updated so we recommend you check the website version of this information to ensure it remains current.

