

Inclusive Education

From

Guide: [ASD and learning](#)

Strategy: [Key areas to support](#)

Suggestion: [Support communication using recommended approaches](#)

Date

22 January 2019

Link

www.inclusive.tki.org.nz/guides/asd-and-learning/support-communication-using-recommended-approaches

Use emoticons

Reading facial expressions can be confusing for students with ASD. In online contexts support understanding using emoticons.

Source: [Asperger Syndrome \(UK\)](#) No captions or transcript

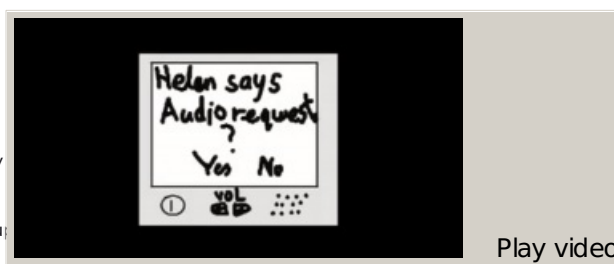
Source:

[Asperger Syndrome \(UK\)](#)

https://youtu.be/AXrf_8cQ03w

This information was downloaded/printed from the Ministry of Education website. Copyright 2018.

Information on the Inclusive Education website is regularly updated to ensure it remains current.



Video hosted on Youtube http://youtu.be/AXrf_8cQ03w

It is noted it is Crown

Information to ensure it

