

Inclusive Education

From

Guide: [ASD and learning](#)

Strategy: [Key areas to support](#)

Suggestion: [Support communication using recommended approaches](#)

Date

23 January 2019

Link

www.inclusive.tki.org.nz/guides/asd-and-learning/support-communication-using-recommended-approaches

Ask students what works for them

Ask students what communication approaches they prefer.

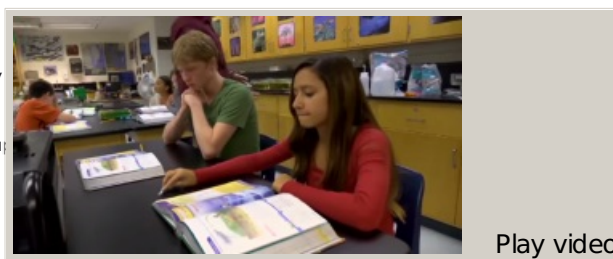
Source: [Organization for Autism Research \(US\)](#) No captions or transcript

Source:

[Organization for Autism Research \(US\)](#)
<http://youtu.be/4yAAOI6JUsM?t=6m15s>

This information was downloaded/printed from the Ministry of Education website. Copyright 2018.

Information on the Inclusive Education website is regularly updated to ensure it remains current.



Video hosted on Youtube <http://youtu.be/4yAAOI6JUsM>

