

# Establish how to share stories of progress and stay in touch

A suggestion for implementing the strategy  
'Making a collaborative learning support plan'  
from the Guide: [Collaborative planning for learning](#)

- 
- Includes:**
- Support reflection with visuals and story telling
  - Support student self-review
  - Sharing student learning through e-portfolios
  - Reflection questions
  - Useful resources

Inclusive Education

From

Guide: [Collaborative planning for learning](#)

Strategy: [Making a collaborative learning support plan](#)

Suggestion: [Establish how to share stories of progress and stay in touch](#)

Date

20 April 2024

Link

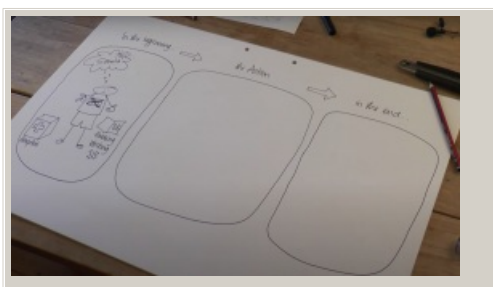
[inclusive.tki.org.nz/guides/collaborative-planning-for-learning/establish-how-to-share-stories-of-progress](https://inclusive.tki.org.nz/guides/collaborative-planning-for-learning/establish-how-to-share-stories-of-progress)

---

## Support reflection with visuals and story telling

Consider how you can support understanding with visuals.

Here is an example of the **Story Hui** approach.



Video hosted on Youtube <http://youtu.be/eozwEwJpi-w>

No captions or transcript

Source:

[Liz at Story Hui \(NZ\)](#)

<https://www.youtube.com/channel/UCUn7RqWs-7APn1qOjBNXtQQ>

Inclusive Education

From

Guide: [Collaborative planning for learning](#)

Strategy: [Making a collaborative learning support plan](#)

Suggestion: [Establish how to share stories of progress and stay in touch](#)

Date

20 April 2024

Link

[inclusive.tki.org.nz/guides/collaborative-planning-for-learning/establish-how-to-share-stories-of-progress](https://inclusive.tki.org.nz/guides/collaborative-planning-for-learning/establish-how-to-share-stories-of-progress)

---

## Support student self-review

Consider a variety of options to support regular student self-review so they can share with whānau and other supporting adults.

For example:

- ✓ Mini checklists
- ✓ Task checklists
- ✓ [Support services hub](#)
- ✓ Scheduled time for self-reflection
- ✓ Self-assessment templates
- ✓ [Moment-in-time assessment](#)
- ✓ Links to show smaller learning goals connected from each lesson to reach long-term goals
- ✓ Peer feedback strategies
- ✓ [Learning journals](#)
- ✓ Digital portfolios
- ✓ Story hui
- ✓ [Access to a learning mentor](#)
- ✓ [Wellbeing book](#)
- ✓ [Goal setting craftivity](#)

Inclusive Education

From

Guide: [Collaborative planning for learning](#)

Strategy: [Making a collaborative learning support plan](#)

Suggestion: [Establish how to share stories of progress and stay in touch](#)

Date

20 April 2024

Link

[inclusive.tki.org.nz/guides/collaborative-planning-for-learning/establish-how-to-share-stories-of-progress](https://inclusive.tki.org.nz/guides/collaborative-planning-for-learning/establish-how-to-share-stories-of-progress)

---

## Sharing student learning through e-portfolios

E-portfolios provide an evolving collection using pictures and videos to celebrate the learning and progress of students.



Video hosted on Vimeo [http://vimeo.com/43221993](https://vimeo.com/43221993)

Closed Captions

Source:

[Enabling e-Learning \(NZ\)](#)

<http://elearning.tki.org.nz/Leadership/School-vision/Setting-up-e-portfolios-at-Kimi-Ora>

## Inclusive Education

From

Guide: [Collaborative planning for learning](#)

Strategy: [Making a collaborative learning support plan](#)

Suggestion: [Establish how to share stories of progress and stay in touch](#)

Date

20 April 2024

Link

[inclusive.tki.org.nz/guides/collaborative-planning-for-learning/establish-how-to-share-stories-of-progress](https://inclusive.tki.org.nz/guides/collaborative-planning-for-learning/establish-how-to-share-stories-of-progress)

---

## Reflection questions

Consider these questions in your own context.

How do you share stories of progress in culturally responsive ways?

How do you ensure ākonga, whānau, and kaiako each have a voice in the storytelling?

How do you ensure barriers to making and sharing progress are identified and removed?

How do you collate stories to celebrate ākonga and their learning in meaningful ways?

How can you continue to support ākonga and their whānau with their learning pathway?

[Inclusive Education](#)

From

Guide: [Collaborative planning for learning](#)

Strategy: [Making a collaborative learning support plan](#)

Suggestion: [Establish how to share stories of progress and stay in touch](#)

Date

20 April 2024

Link

[inclusive.tki.org.nz/guides/collaborative-planning-for-learning/establish-how-to-share-stories-of-progress](https://inclusive.tki.org.nz/guides/collaborative-planning-for-learning/establish-how-to-share-stories-of-progress)

---

## Useful resources



### Whakamahi – Take action with integrity

Whakamahi – Take action with integrity is the fifth stage of the He Pikorua practice sequence for RTLB and Ministry Learning Support specialists. It focuses on acting with respect for the kawa and tikanga that are important to learners and whānau and the early learning service, school, kura, and learning community.

Publisher: He Pikoura

[Visit website](#)

This information was downloaded/printed from the Ministry of Education's website "Inclusive Education". Except where otherwise noted it is Crown Copyright 2018.

Information on the Inclusive Education website is regularly updated so we recommend you check the website version of this information to ensure it remains current.