

Ask the student what will help and consider a learner profile

A suggestion for implementing the strategy
'Identify needs and how to provide support'
from the Guide: [Deaf and hard of hearing](#)

Includes:

- Utilise digital tools
- Support self-advocacy with learner profiles
- Build the learner profile over time
- Let students personalise learner profiles
- What to include in a learner profile
- Useful resources

Inclusive Education

From

Guide: [Deaf or hard of hearing students and learning](#)

Strategy: [Identify needs and how to provide support](#)

Suggestion: [Ask the student what will help and consider a learner profile](#)

Date

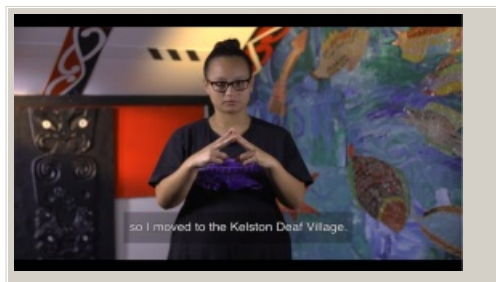
25 April 2024

Link

inclusive.tki.org.nz/guides/deaf-or-hard-of-hearing-students-and-learning/ask-the-student-what-will-help-and-consider-a-learner-profile

Utilise digital tools

These rangatahi explain in Māori, NZ Sign Language, and English, the meaning behind the digital photographs they have chosen to represent something that inspires them.



Video hosted on Youtube http://youtu.be/_4Zk4WDJkhs

Closed Captions

Source:

[Ministry of Education | Te Tāhuhu o te Mātauranga](#)
https://youtu.be/_4Zk4WDJkhs

Inclusive Education

From

Guide: [Deaf or hard of hearing students and learning](#)

Strategy: [Identify needs and how to provide support](#)

Suggestion: [Ask the student what will help and consider a learner profile](#)

Date

25 April 2024

Link

inclusive.tki.org.nz/guides/deaf-or-hard-of-hearing-students-and-learning/ask-the-student-what-will-help-and-consider-a-learner-profile

Support self-advocacy with learner profiles

Create opportunities where students can tell you what supports their learning and what gets in the way.

Having students create a learner profile for themselves is a great way to have them develop a better and fuller understanding of who they are as learners ...

This develops their independence and places them in a better position to self-advocate for the tools, learning materials, and presentation options that can optimise their learning experiences.

Naryn Searcy

Source:

UDL Resource

Inclusive Education

From

Guide: [Deaf or hard of hearing students and learning](#)

Strategy: [Identify needs and how to provide support](#)

Suggestion: [Ask the student what will help and consider a learner profile](#)

Date

25 April 2024

Link

inclusive.tki.org.nz/guides/deaf-or-hard-of-hearing-students-and-learning/ask-the-student-what-will-help-and-consider-a-learner-profile

Build the learner profile over time

Learner profiles can help school staff build relationships with ākonga and their whānau, understand their perspectives and design learning to meet student needs.

Considerations for learner profiles.

- Provide multiple opportunities and methods to develop the profile.
- Prioritise information from students by using effective communication techniques, for example, point to select, or communication boards.
- Revisit the profile on a regular basis to add depth and new insights.
- Use a range of input methods such as conversations, observations, formal reviews and regular surveys.
- Encourage students to understand their needs and preferences as a learner.
- Act on information that is shared so students can see how their voice helps you design learning experiences that work for them.

Inclusive Education

From

Guide: [Deaf or hard of hearing students and learning](#)

Strategy: [Identify needs and how to provide support](#)

Suggestion: [Ask the student what will help and consider a learner profile](#)

Date

25 April 2024

Link

inclusive.tki.org.nz/guides/deaf-or-hard-of-hearing-students-and-learning/ask-the-student-what-will-help-and-consider-a-learner-profile

Let students personalise learner profiles



Source:

Ministry of Education | Te Tāhuhu o te Mātauranga

<https://inclusive-live-storage-stack-asset-storage-s3bucket-3uty0hejzw6u.s3.ap-southeast-2.amazonaws.com/public/inclusive-education/resources/files/Example%2BLearner%2BProfile-Rachel.pdf>

[View full image \(1.2 MB\)](#)

Inclusive Education

From

Guide: [Deaf or hard of hearing students and learning](#)

Strategy: [Identify needs and how to provide support](#)

Suggestion: [Ask the student what will help and consider a learner profile](#)

Date

25 April 2024

Link

inclusive.tki.org.nz/guides/deaf-or-hard-of-hearing-students-and-learning/ask-the-student-what-will-help-and-consider-a-learner-profile

What to include in a learner profile

Discuss with the student and their whānau what to include in a learner profile.

- ✓ Important people
- ✓ Cultural connections and experiences
- ✓ Languages spoken
- ✓ Things the student is good at
- ✓ Memorable life experiences
- ✓ How they like to unwind and relax
- ✓ Likes and interests
- ✓ Dislikes and things they avoid
- ✓ How they like to learn and what helps
- ✓ Things that make it hard for them to learn
- ✓ What they do when they need help

Inclusive Education

From

Guide: [Deaf or hard of hearing students and learning](#)

Strategy: [Identify needs and how to provide support](#)

Suggestion: [Ask the student what will help and consider a learner profile](#)

Date

25 April 2024

Link

inclusive.tki.org.nz/guides/deaf-or-hard-of-hearing-students-and-learning/ask-the-student-what-will-help-and-consider-a-learner-profile

Useful resources



Developing learner profiles

Read time: 3 min

This document provides general support and guidance when developing a learner profile. It includes prompts and questions, alongside purpose and benefits for students.

Publisher:

[Download](#) PDF (211 KB)



About me

This learner profile template is a companion to "Developing learner profiles". It is an interactive PDF with questions for students to answer.

[Download](#) PDF (596 KB)

This information was downloaded/printed from the Ministry of Education's website "Inclusive Education". Except where otherwise noted it is Crown Copyright 2018.

Information on the Inclusive Education website is regularly updated so we recommend you check the website version of this information to ensure it remains current.