

## Inclusive Education

From

Guide: [Deaf or hard of hearing students and learning](#)

Strategy: [Identify needs and how to provide support](#)

Suggestion: [Ask the student what will help and consider a learner profile](#)

Date

27 April 2024

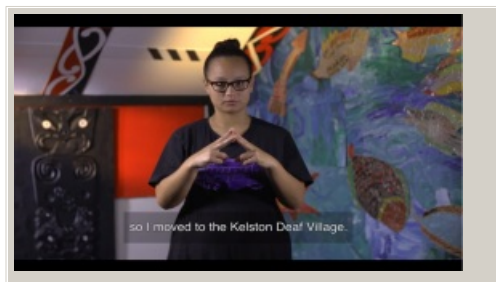
Link

[inclusive.tki.org.nz/guides/deaf-or-hard-of-hearing-students-and-learning/ask-the-student-what-will-help-and-consider-a-learner-profile](https://inclusive.tki.org.nz/guides/deaf-or-hard-of-hearing-students-and-learning/ask-the-student-what-will-help-and-consider-a-learner-profile)

---

## Utilise digital tools

These rangatahi explain in Māori, NZ Sign Language, and English, the meaning behind the digital photographs they have chosen to represent something that inspires them.



Video hosted on Youtube [http://youtu.be/\\_4Zk4WDJkhs](http://youtu.be/_4Zk4WDJkhs)

Closed Captions

Source:

[Ministry of Education | Te Tāhuhu o te Mātauranga](#)  
[https://youtu.be/\\_4Zk4WDJkhs](https://youtu.be/_4Zk4WDJkhs)

This information was downloaded/printed from the Ministry of Education's website "Inclusive Education". Except where otherwise noted it is Crown Copyright 2018.

Information on the Inclusive Education website is regularly updated so we recommend you check the website version of this information to ensure it remains current.

