

## Inclusive Education

From

Guide: [Fetal alcohol spectrum disorder and learning](#)

Strategy: [Helpful classroom strategies years 9-13](#)

Suggestion: [Create structure in a flexible environment](#)

Date

22 January 2019

Link

[www.inclusive.tki.org.nz/guides/fetal-alcohol-spectrum-disorder-and-learning/create-structure-in-a-flexible-environment](http://www.inclusive.tki.org.nz/guides/fetal-alcohol-spectrum-disorder-and-learning/create-structure-in-a-flexible-environment)

---

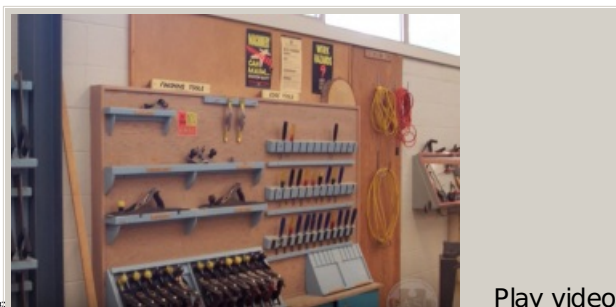
# Create structure in a flexible space

Set up your environment to minimise students' cognitive load.

Providing support for students' specific needs enables them to work more independently.

Source: [POPFASD \(Canada\)](#) Closed Captions

Source:  
[POPFASD \(Canada\)](https://www.youtube.com/channel/UCWRoE1YnO371Fc_hWx6Pnhg)  
[https://www.youtube.com/channel/UCWRoE1YnO371Fc\\_hWx6Pnhg](https://www.youtube.com/channel/UCWRoE1YnO371Fc_hWx6Pnhg)



This information was downloaded/printed from the Ministry of Education Copyright 2018.

Video hosted on Youtube <http://youtu.be/AJqaNNkqxCY> Play video wise noted it is Crown

Information on the Inclusive Education website is regularly updated so we recommend you check the website version of this information to ensure it remains current.

