

# Teach students about about alcohol harm during pregnancy

A suggestion for implementing the strategy 'Helpful classroom strategies years 9-13' from the Guide: [FASD and learning](#)

---

**Includes:**

The NZ Curriculum

Health education NCEA achievement standards

Tūturu teaching resources

A whole school approach

Useful resources

Inclusive Education

From

Guide: [Fetal alcohol spectrum disorder and learning](#)

Strategy: [Helpful classroom strategies years 9-13](#)

Suggestion: [Teach students about about alcohol harm during pregnancy](#)

Date

28 September 2019

Link

[www.inclusive.tki.org.nz/guides/fetal-alcohol-spectrum-disorder-and-learning/teach-students-about-fasd-cause-and-effects](http://www.inclusive.tki.org.nz/guides/fetal-alcohol-spectrum-disorder-and-learning/teach-students-about-fasd-cause-and-effects)

---

## The NZ Curriculum

Alcohol and other drug (AoD) sits primarily in the Health and Physical Education (HPE) learning area of *The New Zealand Curriculum*. As a context for learning it also has relevance for other areas such as the social sciences, English, and science.

FASD causes and effects on children, parents and families can be included in AoD education if teachers choose.

## [Inclusive Education](#)

From

Guide: [Fetal alcohol spectrum disorder and learning](#)

Strategy: [Helpful classroom strategies years 9–13](#)

Suggestion: [Teach students about about alcohol harm during pregnancy](#)

Date

28 September 2019

Link

[www.inclusive.tki.org.nz/guides/fetal-alcohol-spectrum-disorder-and-learning/teach-students-about-fasd-cause-and-effects](http://www.inclusive.tki.org.nz/guides/fetal-alcohol-spectrum-disorder-and-learning/teach-students-about-fasd-cause-and-effects)

---

# Health education NCEA achievement standards

Students might choose these achievement standards using the effects of alcohol on themselves and a developing fetus as a context.

## NCEA Level 1

- [AS90975 Demonstrate understanding of issues to make health enhancing decisions in drug-related situations](#)

## NCEA Level 2

- [AS91235 Analyse an adolescent health issue](#)

## NCEA Level 3

- [AS91464 Analyse a contemporary ethical issue in relation to well-being](#)
- [AS91465 Evaluate models for health promotion](#)

## [Inclusive Education](#)

From

Guide: [Fetal alcohol spectrum disorder and learning](#)

Strategy: [Helpful classroom strategies years 9–13](#)

Suggestion: [Teach students about about alcohol harm during pregnancy](#)

Date

28 September 2019

Link

[www.inclusive.tki.org.nz/guides/fetal-alcohol-spectrum-disorder-and-learning/teach-students-about-fasd-cause-and-effects](http://www.inclusive.tki.org.nz/guides/fetal-alcohol-spectrum-disorder-and-learning/teach-students-about-fasd-cause-and-effects)

---

# Tūturu teaching resources

## **Tūturu resource hub**

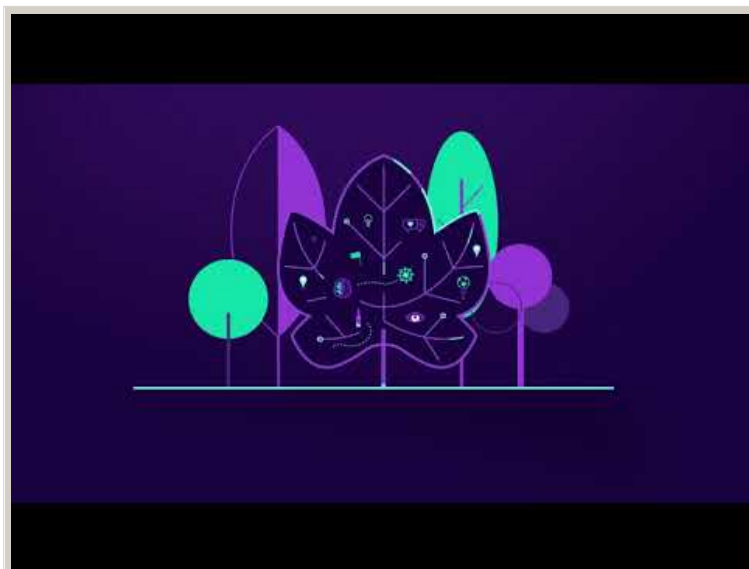
contains teaching and assessment resources for teachers to use with students in English, Geography, Mathematics, and Health.

Source: [New Zealand Drug Foundation - Tūturu](#)

Closed Captions

Source:

[New Zealand Drug Foundation - Tūturu](#)  
<https://www.tuturu.org.nz/>



Play video

Video hosted on Youtube [http://youtu.be/NtvYIJvk\\_jQ](http://youtu.be/NtvYIJvk_jQ)

## [Inclusive Education](#)

From

Guide: [Fetal alcohol spectrum disorder and learning](#)

Strategy: [Helpful classroom strategies years 9–13](#)

Suggestion: [Teach students about about alcohol harm during pregnancy](#)

Date

28 September 2019

Link

[www.inclusive.tki.org.nz/guides/fetal-alcohol-spectrum-disorder-and-learning/teach-students-about-fasd-cause-and-effects](http://www.inclusive.tki.org.nz/guides/fetal-alcohol-spectrum-disorder-and-learning/teach-students-about-fasd-cause-and-effects)

---

## A whole school approach

A positive whole-school approach including and involving the wider school community is important in shaping the values, attitudes and behaviours of the students.

*The New Zealand Curriculum* recognises classroom teaching is only one part of the educative process. Learning is enhanced when students are engaged at school, feel they belong, and are valued.

**Tūturu** supports NZ schools to take a whole school approach to preparing students to live in a world where alcohol and drugs exist.

A whole school approach uses multiple strategies. It incorporates the school culture, curriculum, structures and organisational models (its norms and standards), and the attitudes and values modelled within the school environment. It involves everyone in the school community working together.

## [Inclusive Education](#)

From

Guide: [Fetal alcohol spectrum disorder and learning](#)

Strategy: [Helpful classroom strategies years 9–13](#)

Suggestion: [Teach students about about alcohol harm during pregnancy](#)

Date

28 September 2019

Link

[www.inclusive.tki.org.nz/guides/fetal-alcohol-spectrum-disorder-and-learning/teach-students-about-fasd-cause-and-effects](http://www.inclusive.tki.org.nz/guides/fetal-alcohol-spectrum-disorder-and-learning/teach-students-about-fasd-cause-and-effects)

---

## Useful resources

### Alcohol.org.nz

Publisher: Health Promotion Agency

[Visit website](#)

### Fetal alcohol spectrum disorder: Prevention

Publisher: KidsHealth

[Visit website](#)

### Alcohol and pregnancy

Publisher: Ministry of Health | Manatū Hauora

[Download](#) PDF

This information was downloaded/printed from the Ministry of Education's website "Inclusive Education". Except where otherwise noted it is Crown Copyright 2018.

Information on the Inclusive Education website is regularly updated so we recommend you check the website version of this information to ensure it remains current.