

# Support students' processing and organisation skills

A suggestion for implementing the strategy 'Helpful classroom strategies years 9–13' from the Guide: [Low vision and learning](#)

---

## Includes:

- Offer visual timers
- Support concentration and memory
- Support planning and thinking
- Model planning and thinking

Inclusive Education

From

Guide: [Low vision and learning](#)

Strategy: [Helpful classroom strategies years 9-13](#)

Suggestion: [Support students' processing and organisation skills](#)

Date

25 April 2024

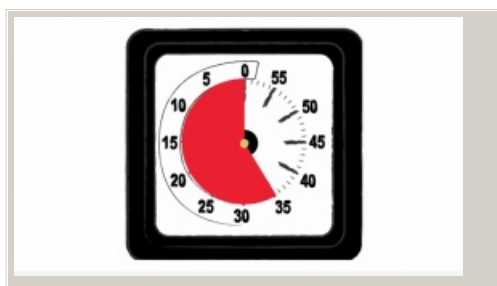
Link

[inclusive.tki.org.nz/guides/low-vision-and-learning/support-students-processing-and-organisation-skills](http://inclusive.tki.org.nz/guides/low-vision-and-learning/support-students-processing-and-organisation-skills)

---

## Offer visual timers

High contrast, uncluttered visual timers may support students in their time management and increase independence.



Video hosted on Vimeo <http://vimeo.com/27596627>

No captions or transcript

Source:

[Time Timer \(US\)](#)

<http://vimeo.com/27596627>

Inclusive Education

From

Guide: [Low vision and learning](#)

Strategy: [Helpful classroom strategies years 9–13](#)

Suggestion: [Support students' processing and organisation skills](#)

Date

25 April 2024

Link

[inclusive.tki.org.nz/guides/low-vision-and-learning/support-students-processing-and-organisation-skills](https://inclusive.tki.org.nz/guides/low-vision-and-learning/support-students-processing-and-organisation-skills)

---

## Support concentration and memory

Provide options to support concentration and short-term memory.

- ✓ Monitor and moderate the classroom for visual and auditory distractions.
- ✓ Present information in a range of ways over an extended period of time (for example, a week) to help students retain information, build up their understanding and familiarity of the topic, and stay stimulated and focused.
- ✓ Discuss with students the effectiveness of the learning environment and remove barriers and make modifications where needed.
- ✓ In online environments, make effective use of visual prompts and cues to support understanding and navigation. Make useful hyperlinks to background knowledge or previous learning to increase connections.
- ✓ Schedule regular short breaks to allow students to move physically.

Inclusive Education

From

Guide: [Low vision and learning](#)

Strategy: [Helpful classroom strategies years 9–13](#)

Suggestion: [Support students' processing and organisation skills](#)

Date

25 April 2024

Link

[inclusive.tki.org.nz/guides/low-vision-and-learning/support-students-processing-and-organisation-skills](https://inclusive.tki.org.nz/guides/low-vision-and-learning/support-students-processing-and-organisation-skills)

---

## Support planning and thinking

Suggestions for supporting students' planning and thinking.

- ✓ Use charts, visual calendars, colour-coded schedules, visible timers and cues to increase the predictability of regular activities and transitions.
- ✓ Encourage students to use their mobile devices to schedule alerts and reminders for regular and novel events and task deadlines.
- ✓ Model and make available graphic organisers and flow charts to support planning and thinking in all curriculum areas.
- ✓ Break tasks and lengthy assignments into small manageable parts. Schedule workflow using [Trello](#) to organise what needs to be done and when.
- ✓ Provide options so that students can submit work online.

Inclusive Education

From

Guide: [Low vision and learning](#)

Strategy: [Helpful classroom strategies years 9-13](#)

Suggestion: [Support students' processing and organisation skills](#)

Date

25 April 2024

Link

[inclusive.tki.org.nz/guides/low-vision-and-learning/support-students-processing-and-organisation-skills](https://inclusive.tki.org.nz/guides/low-vision-and-learning/support-students-processing-and-organisation-skills)

## Model planning and thinking



Source:

Laurie Sullivan

<https://www.flickr.com/photos/32561453@N05/8711384625/in/photolist-egN89D-egTTVS-egN86c-egN8kp-egTTA1-egN8tv-egN8ja-egTTPG-egTTXN-egN88e-egTTUC-egN8eX-egTTyj-egTTHQ-egN8di>

[View full image \(302 KB\)](#)

This information was downloaded/printed from the Ministry of Education's website "Inclusive Education". Except where otherwise noted it is Crown Copyright 2018.

Information on the Inclusive Education website is regularly updated so we recommend you check the website version of this information to ensure it remains current.