

Build capability to personalise learning using technologies

A suggestion for implementing the strategy 'Support inclusive teaching practices' from the Guide: [ILEs](#)

-
- Includes:**
- The Spiral of Inquiry framework
 - e-Learning mentors
 - Support student ownership
 - Reduce barriers to learning
 - Support first languages
 - Useful resources
-

Inclusive Education

From

Guide: [Planning innovative learning environments \(ILEs\)](#)

Strategy: [Support inclusive teaching practices](#)

Suggestion: [Build capability to personalise learning using technologies](#)

Date

21 January 2019

Link

www.inclusive.tki.org.nz/guides/planning-innovative-learning-environments-iles/build-capability-to-personalise-learning-using-technologies

The Spiral of Inquiry framework

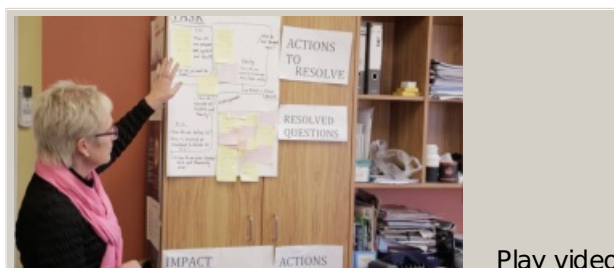
Using the Spiral of Inquiry framework helped Woodend School plan for using digital technologies to support learning and teaching in an ILE.

Source: [Enabling e-Learning \(NZ\)](#) Closed Captions

Source:

[Enabling e-Learning \(NZ\)](#)

<http://elearning.tki.org.nz/Teaching/Innovative-learning-environments/Developing-the-pedagogy-and-practice-for-an-innovative-learning-environment>



Video hosted on Vimeo <http://vimeo.com/142187310>

Inclusive Education

From

Guide: [Planning innovative learning environments \(ILEs\)](#)

Strategy: [Support inclusive teaching practices](#)

Suggestion: [Build capability to personalise learning using technologies](#)

Date

21 January 2019

Link

www.inclusive.tki.org.nz/guides/planning-innovative-learning-environments-iles/build-capability-to-personalise-learning-using-technologies

e-Learning mentors

e-Learning mentors support teachers to develop their next steps for teaching using digital technologies at Pakuranga College. Teachers identify "where they are at" via a rubric.

Source: [Enabling e-Learning \(NZ\)](#)

Closed Captions

Source:

[Enabling e-Learning \(NZ\)](#)

<http://elearning.tki.org.nz/Leadership/Leading-e-Learning/Professional-learning-Planning-strategically>



Video hosted on Vimeo <http://vimeo.com/161700623>

Inclusive Education

From

Guide: [Planning innovative learning environments \(ILEs\)](#)

Strategy: [Support inclusive teaching practices](#)

Suggestion: [Build capability to personalise learning using technologies](#)

Date

21 January 2019

Link

www.inclusive.tki.org.nz/guides/planning-innovative-learning-environments-iles/build-capability-to-personalise-learning-using-technologies

Support student ownership

When adapting or differentiating the curriculum, be careful not to unnecessarily simplify it. Use digital technologies to support participation and personalised learning.

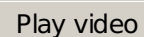
Source: [Enabling e-Learning \(NZ\)](#)

Closed Captions

Source:

[Enabling e-Learning \(NZ\)](#)

<http://elearning.tki.org.nz/Teaching/Inclusive-classrooms/Universal-Design-for-Learning/Using-an-iPad-to-support-learning>

 Play video

Video hosted on Vimeo <http://vimeo.com/105617225>

Inclusive Education

From

Guide: [Planning innovative learning environments \(ILEs\)](#)

Strategy: [Support inclusive teaching practices](#)

Suggestion: [Build capability to personalise learning using technologies](#)

Date

21 January 2019

Link

www.inclusive.tki.org.nz/guides/planning-innovative-learning-environments-iles/build-capability-to-personalise-learning-using-technologies

Reduce barriers to learning

Digital technology supports are available for **all students to use as needed** at Wellington High School.

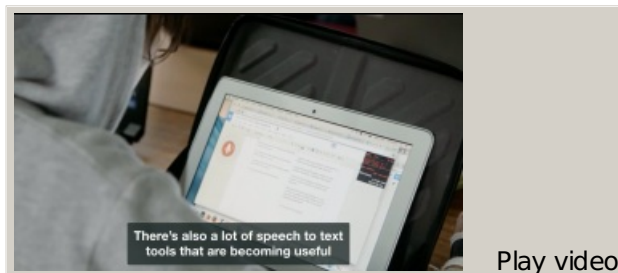
Source: [Enabling e-Learning \(NZ\)](#)

Closed Captions

Source:

[Enabling e-Learning \(NZ\)](#)

<http://elearning.tki.org.nz/Teaching/Inclusive-classrooms/BYOD-supporting-inclusion>



Video hosted on Vimeo <http://vimeo.com/160672115>

Inclusive Education

From

Guide: [Planning innovative learning environments \(ILEs\)](#)

Strategy: [Support inclusive teaching practices](#)

Suggestion: [Build capability to personalise learning using technologies](#)

Date

21 January 2019

Link

www.inclusive.tki.org.nz/guides/planning-innovative-learning-environments-iles/build-capability-to-personalise-learning-using-technologies

Support first languages

Teacher, Bridget Harrison explains how students can use images, and their own language and experiences, to make connections and personalise their learning.

Source: [Enabling e-Learning \(NZ\)](#)

Closed Captions

Source:

[Enabling e-Learning \(NZ\)](#)

<http://elearning.tki.org.nz/Teaching/Innovative-learning-environments/Digital-stories/Improving-student-writing-with-digital-stories>

Play video

Video hosted on Vimeo <http://vimeo.com/62757811>

Inclusive Education

From

Guide: [Planning innovative learning environments \(ILEs\)](#)

Strategy: [Support inclusive teaching practices](#)

Suggestion: [Build capability to personalise learning using technologies](#)

Date

21 January 2019

Link

www.inclusive.tki.org.nz/guides/planning-innovative-learning-environments-iles/build-capability-to-personalise-learning-using-technologies

Useful resources

Assistive Technology Group

Publisher: Ministry of Education | Te Tāhuhu o te Mātauranga

[Visit website](#)

Enabling e-Learning: Innovative learning environments

Publisher: Ministry of Education | Te Tāhuhu o te Mātauranga

[Visit website](#)

This information was downloaded/printed from the Ministry of Education's website "Inclusive Education". Except where otherwise noted it is Crown Copyright 2018.

Information on the Inclusive Education website is regularly updated so we recommend you check the website version of this information to ensure it remains current.