

Inclusive Education

From

Guide: [Planning innovative learning environments \(ILEs\)](#)

Strategy: [Support inclusive teaching practices](#)

Suggestion: [Build capability to personalise learning using technologies](#)

Date

22 January 2019

Link

www.inclusive.tki.org.nz/guides/planning-innovative-learning-environments-iles/build-capability-to-personalise-learning-using-technologies

Reduce barriers to learning

Digital technology supports are available for **all students to use as needed** at Wellington High School.

Source: [Enabling e-Learning \(NZ\)](#)

Closed Captions

Source:

[Enabling e-Learning \(NZ\)](#)

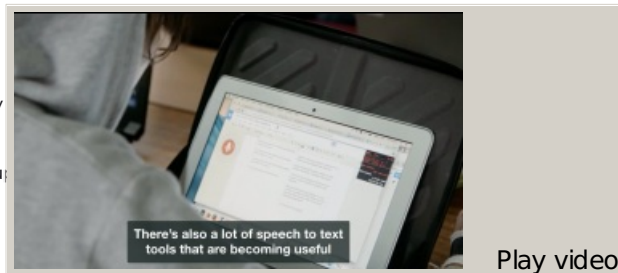
<http://elearning.tki.org.nz/Teaching/Inclusive-classrooms/BYOD-supporting-inclusion>

This information was downloaded/printed from the Ministry of Education website. Copyright 2018.

Information on the Inclusive Education website is regularly updated to ensure it remains current.

It is noted it is Crown

Information to ensure it



Video hosted on Vimeo <http://vimeo.com/160672115>

