

Inclusive Education

From

Guide: [Planning innovative learning environments \(ILEs\)](#)

Strategy: [Design for all from the outset](#)

Suggestion: [Reflect cultural perspectives, consider te ao Māori and other cultures, design to support protocols and practices](#)

Date

24 January 2019

Link

www.inclusive.tki.org.nz/guides/planning-innovative-learning-environments-iles/reflect-cultural-perspectives-consider-te-ao-maori-and-other-cultures-design-to-support-protocols-and-practices

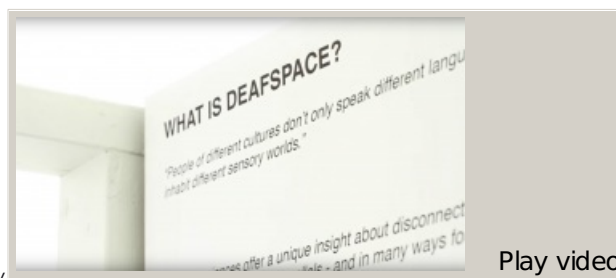
DeafSpace

Vision and touch are the primary means of spatial awareness and orientation for Deaf students.

Design and plan your space to include students who are Deaf and hard of hearing.

Source: [Vox \(US\)](#) Closed Captions

Source:
[Vox \(US\)](#)
<https://www.youtube.com/watch?v=FNGp1aviGvE>



Play video

This information was downloaded/printed from the Ministry of Education website. Copyright 2018.

Video hosted on Youtube <http://youtu.be/FNGp1aviGvE>

It is Crown

Information on the Inclusive Education website is regularly updated so we recommend you check the website version of this information to ensure it remains current.

