

Inclusive Education

From

Guide: [Planning innovative learning environments \(ILEs\)](#)

Strategy: [Work with parents and whānau](#)

Suggestion: [Welcome parent and community input of support, expertise, and resources](#)

Date

21 January 2019

Link

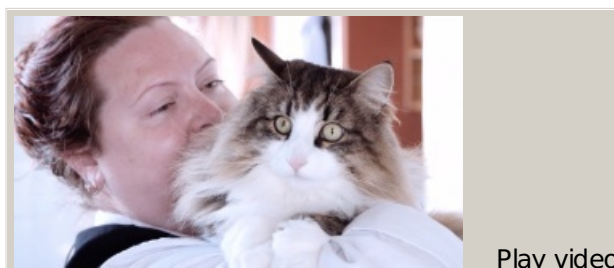
www.inclusive.tki.org.nz/guides/planning-innovative-learning-environments-iles/welcome-parent-and-community-input-of-support-expertise-and-resources

Listen to families

Parents, Dayna and Phil, explain how sharing successful approaches and incorporating their daughter's interests reduced anxiety and provided consistency between home and school.

Source: [Ministry of Education, inclusive education videos \(NZ\)](#) Closed Captions

Source:
[Ministry of Education, inclusive education videos \(NZ\)](#)
<https://vimeo.com/album/2950799>



This information was downloaded/printed from the Ministry of Education website. Copyright 2018.

Video hosted on Vimeo <http://vimeo.com/186358577>

Play video

As noted it is Crown

Information on the Inclusive Education website is regularly updated so we recommend you check the website version of this information to ensure it remains current.

