

Create safe, inclusive environments with students

A suggestion for implementing the strategy 'Design inclusive school-wide systems and processes' from the Guide: [LGBTIQA+ students](#)

Includes:

- Seek diverse perspectives
 - Engage students as partners
 - Acknowledge expertise
 - Plan environments together
 - Introduce students to UDL
 - Useful resources
-

Inclusive Education

From

Guide: [Supporting LGBTIQ+ students](#)

Strategy: [Design inclusive school-wide systems and processes](#)

Suggestion: [Create safe, inclusive environments with students](#)

Date

22 January 2019

Link

www.inclusive.tki.org.nz/guides/supporting-lgbtika-students/create-safe-inclusive-environments-with-students

Seek diverse perspectives

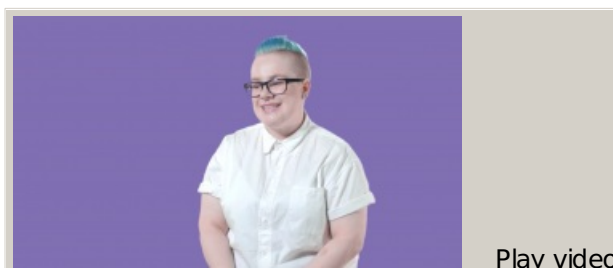
Young people discuss their experiences of school and reflect on how to create spaces where we all belong.

Source: [Inside Out - RainbowYOUTH \(NZ\)](#)

Closed Captions

Source:

[Inside Out - RainbowYOUTH \(NZ\)](#)
<http://insideout.ry.org.nz/ep5/>



Video hosted on Vimeo <http://vimeo.com/138438744>

Inclusive Education

From

Guide: [Supporting LGBTIQ+ students](#)

Strategy: [Design inclusive school-wide systems and processes](#)

Suggestion: [Create safe, inclusive environments with students](#)

Date

22 January 2019

Link

www.inclusive.tki.org.nz/guides/supporting-lgbtiqa-students/create-safe-inclusive-environments-with-students

Engage students as partners

Student-led groups can provide advice and guidance on the development of supportive and inclusive environments.

Groups could include:

- diversity groups
- Queer Straight Alliances
- peer sexuality support groups
- lunch forums and discussion groups
- school health councils.

Inclusive Education

From

Guide: [Supporting LGBTIQ+ students](#)

Strategy: [Design inclusive school-wide systems and processes](#)

Suggestion: [Create safe, inclusive environments with students](#)

Date

22 January 2019

Link

www.inclusive.tki.org.nz/guides/supporting-lgbtiqa-students/create-safe-inclusive-environments-with-students

Acknowledge expertise

Recognise the expertise of LGBTIQ+ young people through:

- ▶▶ building the capacity of LGBTIQ+ young people to contribute to school-wide events and decisions
- ▶▶ seeking student feedback on issues and ideas
- ▶▶ creating opportunities to seek student perspectives
- ▶▶ including students in school reviews
- ▶▶ inviting representation on the student council
- ▶▶ developing inclusive schooling and anti-bullying policies in partnership with students.

Inclusive Education

From

Guide: [Supporting LGBTIQ+ students](#)

Strategy: [Design inclusive school-wide systems and processes](#)

Suggestion: [Create safe, inclusive environments with students](#)

Date

22 January 2019

Link

www.inclusive.tki.org.nz/guides/supporting-lgbtiqa-students/create-safe-inclusive-environments-with-students

Plan environments together



Source: Ministry of Education | Te Tāhuhu o te Mātauranga

Source:

[Ministry of Education | Te Tāhuhu o te Mātauranga](#)

[View full image \(525 KB\)](#)

Involve students in decisions about learning spaces.

Discuss how to support both learning and wellbeing.

Inclusive Education

From

Guide: [Supporting LGBTIQ+ students](#)

Strategy: [Design inclusive school-wide systems and processes](#)

Suggestion: [Create safe, inclusive environments with students](#)

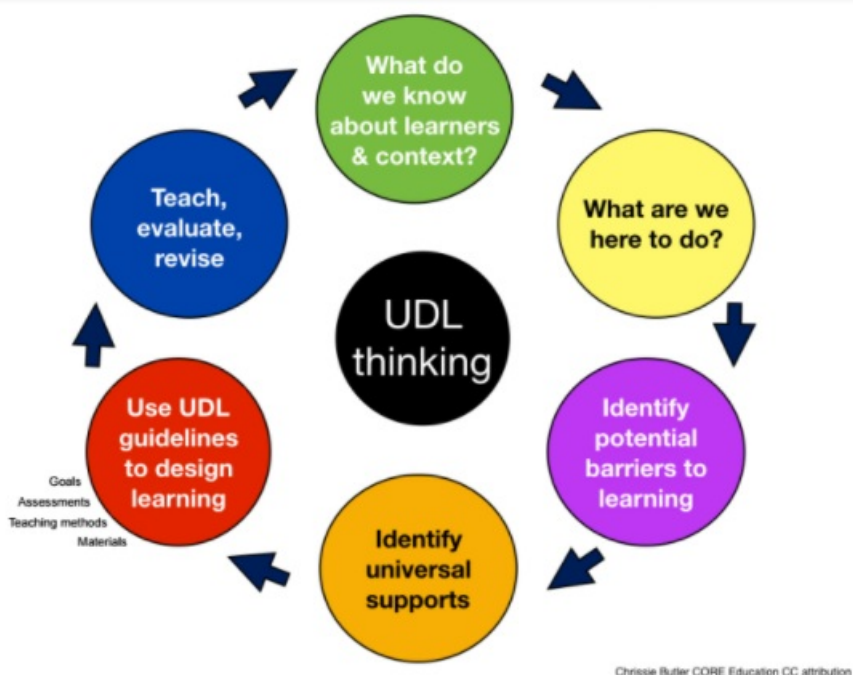
Date

22 January 2019

Link

www.inclusive.tki.org.nz/guides/supporting-lgbtiqa-students/create-safe-inclusive-environments-with-students

Introduce students to UDL



Source: [Chrissie Butler, CORE Education](#)

Source:

[Chrissie Butler, CORE Education](#)

<http://www.core-ed.org/>

[View full image \(135 KB\)](#)

UDL is a framework for planning for diversity.

Introduce the UDL thinking cycle to students. It always starts with "Who are the people and what do they bring?"

Inclusive Education

From

Guide: [Supporting LGBTIQ+ students](#)

Strategy: [Design inclusive school-wide systems and processes](#)

Suggestion: [Create safe, inclusive environments with students](#)

Date

22 January 2019

Link

www.inclusive.tki.org.nz/guides/supporting-lgbtiqa-students/create-safe-inclusive-environments-with-students

Useful resources



Supporting LGBTI young people in New Zealand

Read time: 18 min

Publisher: Ministry of Social Development

[Download PDF](#)



Affirming diversity of sexualities and gender identities in the school community

Read time: 36 min

Publisher: New Zealand Post Primary Teachers' Association

[Visit website](#)

This information was downloaded/printed from the Ministry of Education's website "Inclusive Education". Except where otherwise noted it is Crown Copyright 2018.

Information on the Inclusive Education website is regularly updated so we recommend you check the website version of this information to ensure it remains current.