

Inclusive Education

From

Guide: [Supporting LGBTIQ+ students](#)

Strategy: [Design inclusive school-wide systems and processes](#)

Suggestion: [Create safe, inclusive environments with students](#)

Date

19 January 2019

Link

www.inclusive.tki.org.nz/guides/supporting-lgbtqa-students/create-safe-inclusive-environments-with-students

Seek diverse perspectives

Young people discuss their experiences of school and reflect on how to create spaces where we all belong.

Source: [Inside Out - RainbowYOUTH \(NZ\)](#)

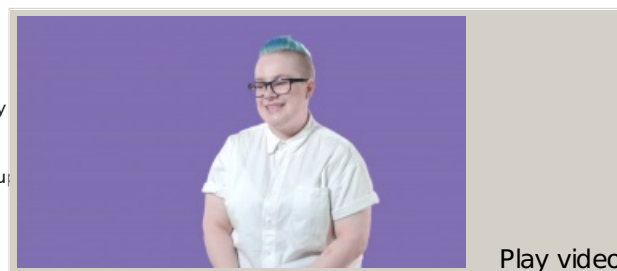
Closed Captions

Source:

[Inside Out - RainbowYOUTH \(NZ\)](#)
<http://insideout.ry.org.nz/ep5/>

This information was downloaded/printed from the Ministry of Education website. Copyright 2018.

Information on the Inclusive Education website is regularly updated to ensure it remains current.



Video hosted on Vimeo <http://vimeo.com/138438744>

It is noted it is Crown
Information to ensure it

