

## Inclusive Education

From

Guide: [Supporting LGBTIQ+ students](#)

Strategy: [Address immediate environmental, physical and social needs](#)

Suggestion: [Respond to bullying](#)

Date

17 January 2019

Link

[inclusive.tki.org.nz/guides/supporting-lgbtqa-students/respond-to-bullying](http://inclusive.tki.org.nz/guides/supporting-lgbtqa-students/respond-to-bullying)

---

# Understand homophobia and transphobia

Young people discuss their experiences of homophobic and transphobic bullying.

Source: [Inside Out – RainbowYOUTH \(NZ\)](#)

Closed Captions

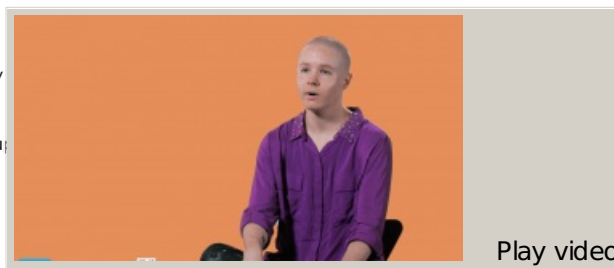
Source:

[Inside Out – RainbowYOUTH \(NZ\)](#)

<http://insideout.ry.org.nz/>

This information was downloaded/printed from the Ministry of Education website. Copyright 2018.

Information on the Inclusive Education website is regularly updated to ensure it remains current.



Video hosted on Vimeo <http://vimeo.com/138438756>

It is noted it is Crown

Information to ensure it

