

Inclusive Education

From

Guide: [Supporting LGBTIQ+ students](#)

Understand: [Understand the key concerns of students](#)

Date

20 April 2019

Link

www.inclusive.tki.org.nz/guides/supporting-lgbtiqa-students/understand-the-key-concerns-of-students

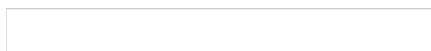
Understand the key concerns of students

Young people share their experiences of school and outline why we need to work together to make them safer more inclusive places to learn.

Seven common concerns

Listen and learn from students.

Create opportunities for them to share their concerns and experiences in ways that work for them.



Source: Ministry of Education | Te Tāhuhu o te Mātauranga

Source:

[Ministry of Education | Te Tāhuhu o te Mātauranga](#)

[View full image \(94 KB\)](#)

Bullying, homophobia and transphobia

Young people discuss their experiences of homophobic and transphobic bullying.

Young people discuss their experiences of ho

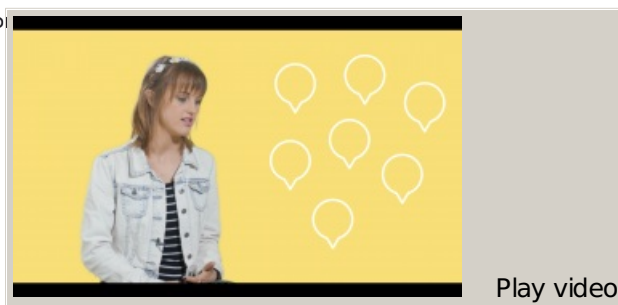
Source: [Inside Out – RainbowYOUTH \(NZ\)](#)

Closed Captions

Source:

[Inside Out – RainbowYOUTH \(NZ\)](#)

<http://insideout.ry.org.nz/ep4/>



Video hosted on Vimeo <http://vimeo.com/138438756>

The need for visibility

Don't talk "around" LGBTIQ issues.

Acknowledge our existence and make it clear that we matter and will be protected by the school.

Ministry of Education

Source: [Bullying prevention and response: A guide for schools](#)

Source:
[Bullying prevention and response: A guide for schools](#)
<https://www.education.govt.nz/assets/Documents/School/Bullying-prevention/MOEBullyingGuide2015Web.pdf>

Risks of isolation

Sexuality may be viewed differently according to people's social and cultural contexts, values, and beliefs.

This short video excerpt highlights the need for visibility to build understanding and reduce isolation.

It is taken from the LGBTIQ+ Aotearoa Then & Now documentary.

Source: [Tairawhiti Production House Ltd](#)

Closed Captions

Source:
[Tairawhiti Production House Ltd](#)
<https://www.youtube.com/channel/UC>



The impact of binary

Video hosted on Youtube <http://youtu.be/b5j6Z701Jvo>

Young people describe the impact of binary norms on their learning and wellbeing.

Young people explore and challenge norms a

Source: [Inside Out – RainbowYOUTH \(NZ\)](#)

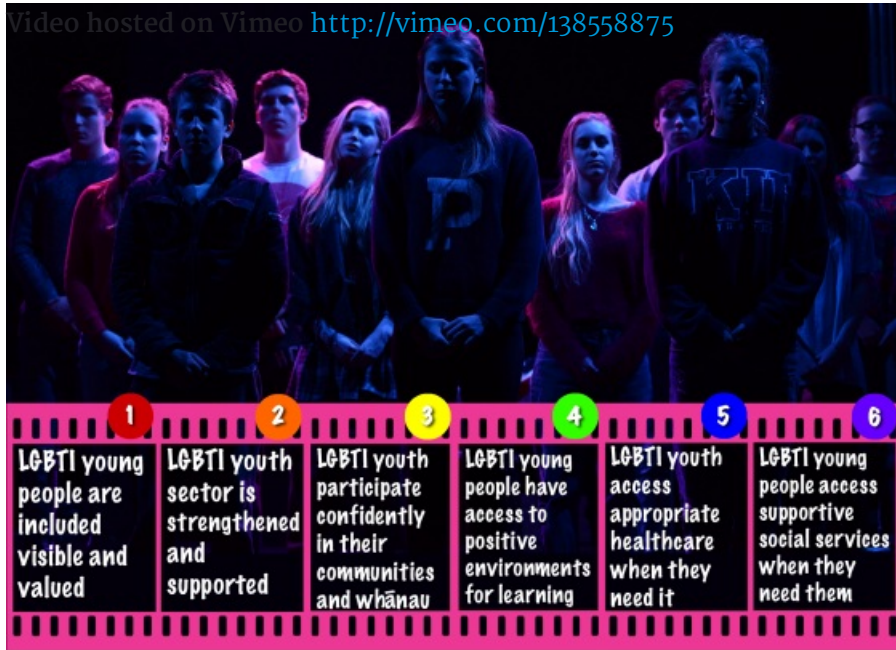
Closed Captions

Source:
[Inside Out – RainbowYOUTH \(NZ\)](#)
<http://insideout.ry.org.nz/ep3/>



Six wellbeing objectives

Consultation with LGBTIQ+ young people identified six key objectives to support wellbeing and participation.



Source: [Derivative from Wellington College CC BY-NC 2.0](#)

Source:

[Derivative from Wellington College CC BY-NC 2.0](#)

<https://www.flickr.com/photos/wellingtoncollege/12344382174/in/photostream/>

[View full image \(1.8 MB\)](#)

This information was downloaded/printed from the Ministry of Education's website "Inclusive Education". Except where otherwise noted it is Crown Copyright 2018.

Information on the Inclusive Education website is regularly updated so we recommend you check the website version of this information to ensure it remains current.