

Inclusive Education

From

Guide: [The role of the board of trustees](#)

Strategy: [Understand inclusive education](#)

Suggestion: [Identify what makes an inclusive school](#)

Date

19 January 2019

Link

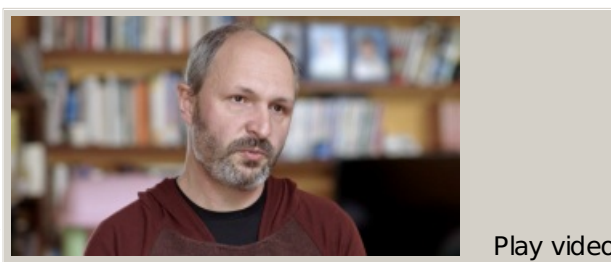
www.inclusive.tki.org.nz/guides/the-role-of-the-board-of-trustees/identify-what-makes-an-inclusive-school

Commit to inclusion

Board of Trustee
chairperson at
Berhampore School
talks about their
expectation that every
child will be included
socially and in the
learning.

Source: [Ministry of Education, inclusive education videos \(NZ\)](#) Closed
Captions

Source:
[Ministry of Education, inclusive education videos \(NZ\)](#)
<https://vimeo.com/album/2950799>



This information was downloaded/printed from the Ministry
Copyright 2018.

Video hosted on Vimeo <http://vimeo.com/159138180>

Information on the Inclusive Education website is regularly updated so we recommend you check the website version of this information to ensure it remains current.

