

Inclusive Education

From

Guide: [Universal Design for Learning](#)

Strategy: [Design considerations in primary settings](#)

Suggestion: [Refine and support goal setting](#)

Date

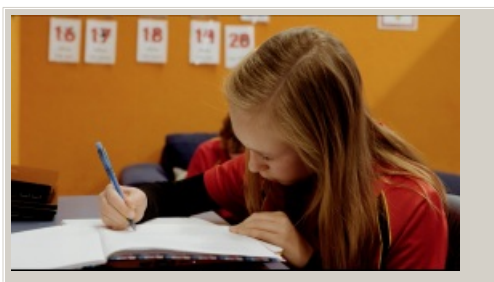
27 April 2024

Link

inclusive.tki.org.nz/guides/universal-design-for-learning/refine-and-support-goal-setting-2

Purposeful goals

Students at Halswell School share their experience of goal setting and monitoring their own progress.



Video hosted on Vimeo <http://vimeo.com/146593157>

Closed Captions

Source:

[Enabling e-Learning \(NZ\)](#)

<http://elearning.tki.org.nz/Teaching/Innovative-learning-environments/Student-agency-in-an-innovative-learning-environment>

This information was downloaded/printed from the Ministry of Education's website "Inclusive Education". Except where otherwise noted it is Crown Copyright 2018.

Information on the Inclusive Education website is regularly updated so we recommend you check the website version of this information to ensure it remains current.

